

CONTACT – NAGARJUNA REDDY
9844666789/ 9060606789

Our villa caters to the
working crowd who
want to take a break
from the busy city life

VILLA
DEWS

DC Converted plots
with villa

Contact

Seegehalli, whitefield road
bangalore.
9060606789, 9916691007

[Author name]
[Email address]



VILLA DEWS

1. Main Entry
2. Children Play
3. Amphitheatre
4. Park
5. Dressing Rooms
6. Swimming Pool
7. Children Pool
8. Club House
9. Basket Ball Court
10. Cricket Net
11. STP
12. Road
13. Services



CLUB HOUSE

- Club House with 5300 sft
- Multi-Purpose Hall
- Badminton Court
- Fully Equipped Gym
- Banquet Hall
- Indoor Games
- Table Tennis
- Chess



SWIMMING POOL

EAST FACING VILLA



EAST FACING VILLA (32'X44')



GROUND FLOOR PLAN



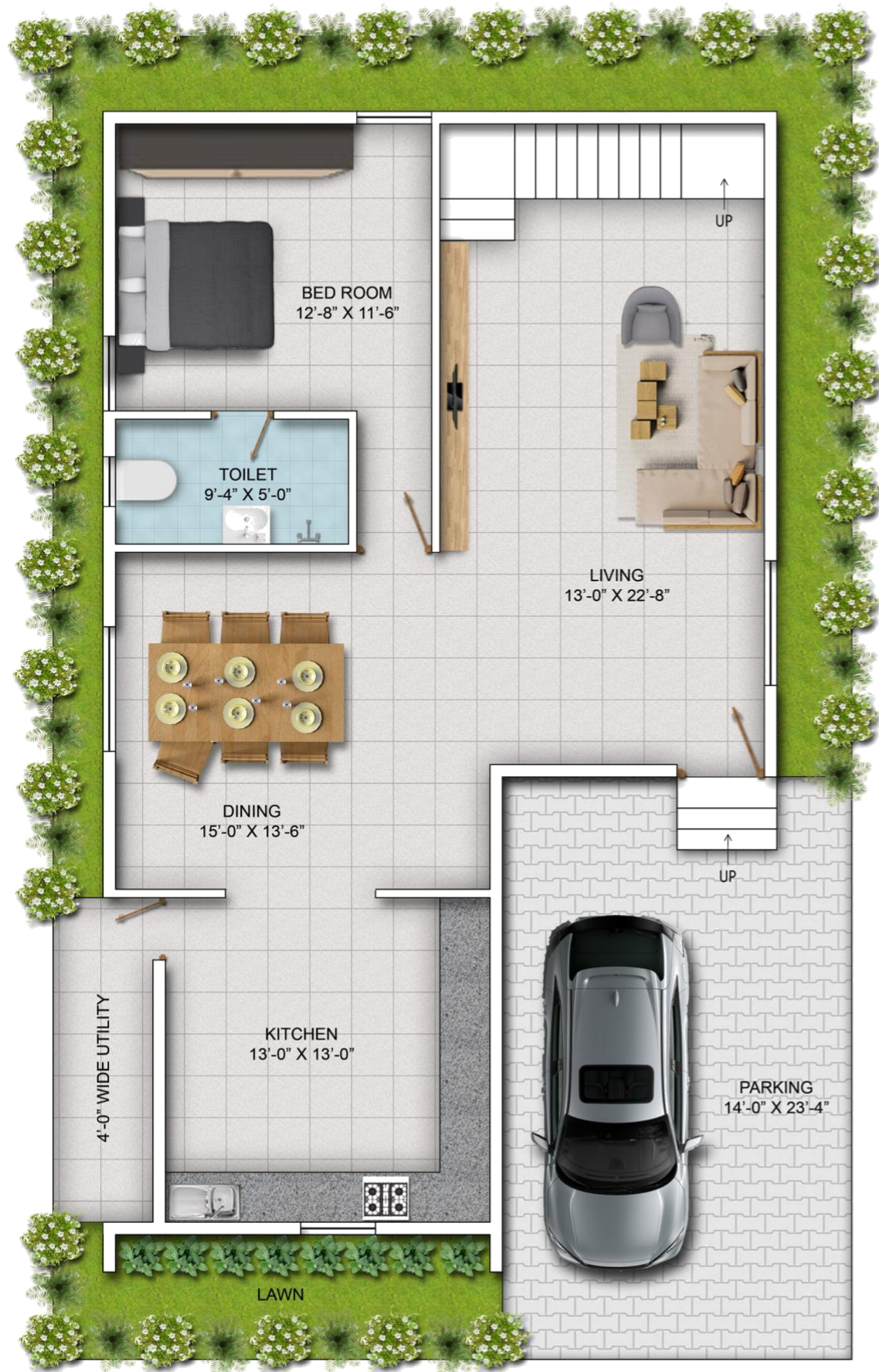
AREA STATEMENT

SIZE	AREA	SUPER BUA	FACING
32'X44'	1408	1837	East
32'X53'	1696	2247	East



FIRST FLOOR PLAN

EAST FACING VILLA (32'X53')



GROUND FLOOR PLAN



FIRST FLOOR PLAN

SITE AREA -	1696 SFT
<u>BUA STATEMENT (SFT)</u>	
GROUND FLOOR -	1013
FIRST FLOOR -	1234
TOTAL	- 2247

WEST FACING VILLA

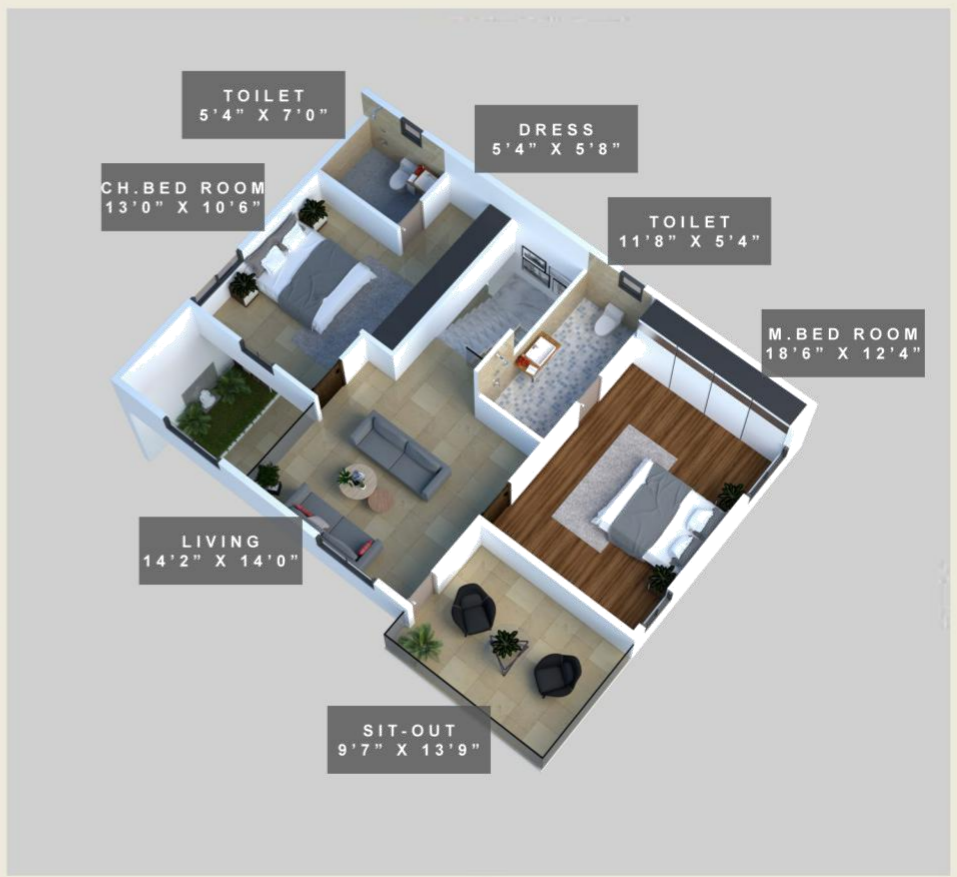


WEST FACING VILLA (32'X44')



AREA STATEMENT

SIZE	AREA	SUPER BUA	FACING
32'X44'	1408	1850	West
32'X40'	1280	1632	West



WEST FACING VILLA (32'X40')



GROUND FLOOR PLAN



FIRST FLOOR PLAN

SITE AREA -	1280SFT
<u>BUA STATEMENT (SFT)</u>	
GROUND FLOOR-	732
FIRST FLOOR -	900
TOTAL	- 1632

CLUB HOUSE



CLUB HOUSE



GROUND FLOOR



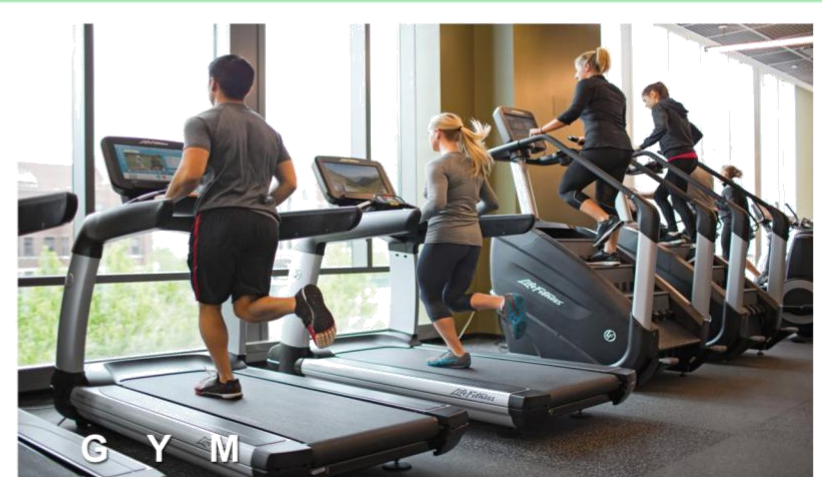
FIRST FLOOR



B A D M T I N T O N



B A N Q U E T



G Y M

S P E C I F I C A T I O N S

→ STRUCTURE

RCC framed structure as per structural design recommended grade concrete and steel grade TMT steel designed as per relevant BIS codes for earth quake resistance structurally efficient system implemented.

→ WALLS

External walls with 6" solid concrete blocks and internal walls with 4" solid concrete blocks.

→ PLASTERING

Double coat sponge finish for internal and external walls.

→ DOORS

Teak wood frames for Main Door with designer skin moulded shutter. Internal sal wood with designer skin moulded Doors.

→ WINDOWS

UPVC sliding doors & mosquito mesh with safety grills.

→ FLOORING

2.5'*2.5' Living Area with verified tiles, Granite for stair case with S S Railing. Wooden pattern tiles in all bedrooms with 3" Skirting all around for all rooms. Anti-skid ceramic tiles for balcony, utility and toilets.

→ WATER SUPPLY

Adequate water supply through borewell.

→ TOILETS

Jaguar/Hindware and equivalent bath fittings in each toilet, sanitary fittings, 12"x12" anti-skid finished ceramic tiles flooring and ceramic glazed finished tiles dado with edge profiles up to 7'. Washbasin in all toilets, provision for exhaust fan.

→ ELECTRIFICATION

Concealed Copper Finolex or Anchor wiring, Anchor/Legrand, GM and equivalent, switches for adequate light. Fan, Geyser, Exhaust Fan, A/c Points in all bedrooms and power points.

→ PLUMBING

Astral flow guard, Ashirwad, Finolex CPVC plumbing system.

→ PAINTING

Asian premium emulsion over two coats cement base wall putty for internal walls.

→ COMMUNICATION

Telephone points in all rooms and T.V. Points in hall and master bedroom.

→ GENERATOR

100% Generator power backup for each villa for lighting circuits.

→ SECURITY

Intercom facility from each villa to security and to other villa, security with CCTV surveillance at the entry and exit gates.

STREET VIEW



Route Map



LOCATION HIGHLIGHTS

Connectivity from the Project:

- Distance to KIAL (Airport) 13 km
- Distance to KIDB Aerospace, Defence and IT SEZ - 7 km
- Distance from Bearys Global Research Triangle - 7km
- Distance from TIN FACTORY - 15Kms
- Distance from MG Road -22 Kms
- Distance from ITPL – 15 Kms
- Just 15 - 20 mins from IT Hub, Upcoming Whitefield metro station - 13 km
- Nearest Educational Institutions : (in the radius of 1.0 kms to 5 Kms)
- New Baldwin International School - 3km
- Shree Ram Global School - 2km
- Vibgyor School - 6km
- National Public School (NPS) - 7 km
- Narayana e techno School - 2 km
- Eleven International School - 1.5 km
- Nearest Hospital: Vydehi Hospital, MVJ Hospital, East Point Hospital

GREENTREE HOMES

Office : Whitefield Road, Bangalore